



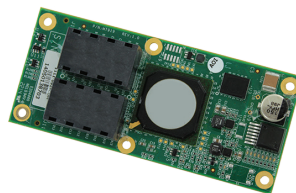
## MILTECH 309

The MILTECH 309 Fast Ethernet switch on board (ESoB) is a complete system-level switch with eight 10/100Mbps ports. Using board-to-board connectors, it can be easily integrated into embedded computing or communication platforms to provide LAN connectivity. The MILTECH 309 is less than 1.7" x 3" x .5", features a wide temperature range and conformal coating.



## MILTECH 919

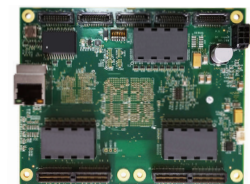
The MILTECH 919 is a fully-managed military-grade board-level Gigabit switch with 8 triple-speed (10/100/1000Mbps) ports + 1 x 100/1000 fiber optic port. With built in board-to-board connectors, a wide temperature range and conformal coating, it is an ideal solution for adding advanced switching capabilities to any OEM embedded platform with space and weight limitations.



## MILTECH 914

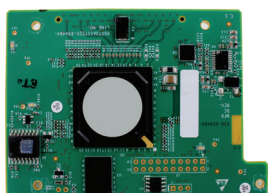
**NEW!**

The MILTECH 914 is a board-level 14 port (10/100/1000) managed switch that supports advanced L2+ networking features. With a conformal coating, complies to MILSTD810F/G/GM when housed in an appropriate enclosure. A flat cable connectors and 6-19VDC power range allows easy mating with other board-level compute platforms and power systems.



## MILTECH 9124, 9128

The MILTECH 9124 and MILTECH 9128 provides both Layer 2 Ethernet switching and Layer 3 dynamic routing on a board-level, rugged, plug-in module for embedded communications platforms. The MILTECH 9124 has 24 triple-speed (10/100/1000Mbps) ports and the MILTECH 9128 adds an additional four 10 GbE ports. MILSTD 810 temperature range, conformal coating and board-to-board connectors, allow easy integration into MIL-STD systems.



## MILTECH 303, 300

The MILTECH 303 is the industry's only military-grade USB 3.1 HUB. It provides connectivity, robust power management, and a charging tool for USB 3.1 devices. It has a wide voltage range of 12-28VDC and provides up to 2A of downstream power to each port using DCP, CDP, SDP or custom profiles via SMBus or OT. The MILTECH 300 is a board-only version of the MILTECH 303.



## MILTECH 406, 306

The 406 is a multi-protocol device that combines Ethernet, USB, Serial and SMBUS all in one ultra-compact MIL-STD package. The 306 is the same physical dimensions as the 308 but is a USB hub in a 7+1 configuration.



## MILTECH 308, 304

This ultra-compact unmanaged Fast Ethernet switch comes in both an 8 port and 4 port version and has been adopted as the switch of choice in soldier carry and UAV/UAS applications.



## MILTECH 918, 904

Developed as a soldier-carry and UAV ultra-compact gigabit Ethernet switch, this is an 8 port and 4 port fully managed switch in a form factor about the size of a credit card.



## MILTECH 9012, 9012C

Compact and lightweight 12 port gigabit Ethernet router for aerial and ground vehicles. This very powerful L2/L3 Ethernet device has a 56 Gbps backplane which exceeds wire-speed and supports IPV6, VLANs, QoS, dynamic routing as well as other features.

The 9012C adds a fully-programmable Linux-based computer, running CENTOS, for 3rd party applications including an optional Cisco ESR router, specialized networking software, encryption and security measures and more.



## MILTECH 610-POE, 910-POE

An 8 port POE+ switch available in both Fast Ethernet and Gigabit Ethernet versions. It offers a total budget of 330 watts of power that can be dynamically allocated over 8 ports (up to 60 watts per port) to power both IEEE 802.3at and 802.3af compliant devices through an Ethernet cable.



## MILTECH 908, 908M

The 908 series products are 8 port gigabit Ethernet switches and come in both unmanaged (908) and managed (908M) configurations. These are perfect for APC, tanks, and naval vessels.



## MILTECH 908MP, 912

Fully managed Layer 2+ Ethernet switches for mobile platforms. The MILTECH 908MP delivers 8 10/100/1000 Ethernet ports over a single MIL-D-38999 connector.

The MILTECH 912 supports 12 10/100/1000 Ethernet ports over two connectors.



## MILTECH 948

The MILTECH 948 comes in multiple configurations with up to 8 triple speed (10/100/1000) ports and the option to support up to 2 fiber ports at either speed 100 or 1000. Its flexible configuration with both fiber and copper ports allows the MILTECH 948 to act as a physical media converter to bridge a change in physical media or extend a LAN connection.



## MILTECH 1000

An excellent solution for extending Ethernet copper ports over fiber optics. MILTECH™ 1000 is a series of military-grade media converters, with up to 2 X gigabit copper Ports 10/100/1000Base-TX and 2 X 100/1000Base-FX fiber ports in various combinations. The MILTECH 1000 is capable of supporting PoE on 2 ports (IEEE802.3af and IEEE802.3at).



## EVALUATION BOARDS AND ACCESSORIES

Techaya makes it easier to speed up lab testing and development of systems around our board-level switches.

Adapter/evaluation carrier boards are available that provide RJ45 or SPF connections for each port on the card.

Power and network management cables are available for purchase with every Techaya product.

Please check our web site at [www.militaryethernet.com](http://www.militaryethernet.com) for appropriate Evaluation Boards and Cables for each product.